

Celebrate

Life!

in Cheshire



Elim Park

Making a great community resource *Even Better!*

Elim Park touches nearly every life in Cheshire. You probably know one of the more than 350 residents who call Elim Park home; are familiar with one of the 350 employees; serve as a vendor to this not-for-profit 501(c)(3) organization; or simply enjoy the peace-of-mind that comes from knowing this valuable continuum of care is located close to home. Most of us in Cheshire have come to realize that Elim Park is an integral part of our town.

I admire and respect the mission, people and values of Elim Park. When I was asked to serve as Chairman of the *Celebrate Life!* campaign, I did not hesitate to accept this role. It is my honor to be the public voice of this campaign and to ask my community peers to join me in supporting this incredibly valuable resource for the greater Cheshire area.

The leadership team of Elim Park continually seeks new ways to promote health, family, faith and community. In the coming months, we will see two significant additions to the Elim Park campus including:

- Bethel Place for the Performing Arts and Worship
- The Wellness Center for Physical Health

These two new facilities will benefit the people of the greater Cheshire area. Bethel Place and the Wellness Center will provide unique and greatly needed resources that are currently not available within our town.

For the first time in its 100-year history, Elim Park is embarking on a community-wide expansion and seeking support to make this vision a reality.

The entire project will require \$6 million to complete. Elim Park's Board of Directors has committed \$2 million. We are looking to individuals within Elim Park, and the greater Cheshire area to raise the \$4 million balance.

To date we have been blessed with very generous support. I invite you to review this brochure and thoughtfully consider how you can help *Celebrate Life!* in Cheshire.



Respectfully,

A handwritten signature in black ink that reads "Bill Meyerjack". The signature is written in a cursive style.

Bill Meyerjack, Chairman
Celebrate Life! Capital Campaign

“...these two new facilities will benefit the people of the greater Cheshire area.”



"Ballet is my passion. The dance company I belong to would love to hold recitals in town. The expansion of Elim Park's present chapel with better staging, lighting, and sound equipment would offer our dance company the space to present exciting performances in Cheshire. My grandma, Marguerite (Poggy) Wilson, who lives in an apartment at ElimPark, is also excited about the new seats for the hall. I think it will be great!"

- Erin Wilson,
Cheshire High School Student



"Elim Park is one of Cheshire's greatest assets. Not only is Elim Park an outstanding civic partner through the Chamber and other local organizations, it is one of our largest employers in town. The more than 350 local area residents employed with Elim Park positively impact every facet of Cheshire's private sector. Elim Park is also home to more than 350 Cheshire residents. These are independent seniors who shop at our stores, bank at our financial institutions, and worship with us at our synagogues and churches. The projects supported by the *Celebrate Life!* Campaign will strengthen one of the driving forces of the Cheshire economy, and in turn, strengthen Cheshire as well."

- Sheldon Dill, Executive Director,
Cheshire Chamber of Commerce

Bethel Place - A new home for performing arts and worship

Bethel Place, a professionally designed center, will accommodate up to 350 attendees. This highly flexible space will adapt itself to provide venues for a variety of engagements including local performing arts, touring cultural productions and guest speakers. Gently sloping seating will offer excellent views for all audience members, and special consideration during planning has been given to accommodate all needs. Modern sound and lighting systems will enhance every performance for the audience. A refurbished Moehler pipe organ, new concert grand piano and stained glass windows will be highlights of Bethel Place, making the Grand Hall a great place to enjoy both chamber music and church choirs. By opening the doors of Bethel Place, we will expand the richness of life in Cheshire.

"Elim Park is also home to more than 350 Cheshire residents. These are independent seniors who shop at our stores, bank at our financial institutions, and worship with us at our synagogues and churches."

- Sheldon Dill, Executive Director,
Cheshire Chamber of Commerce



Artist's conception of the Grand Hall of Bethel Place

Strengthening

Lives,



“As a new member of the Cheshire workforce, I am delighted to be developing the first comprehensive wellness program for Elim Park. By combining staff, programming, and the new facility, Elim Park will continue to draw attention from seniors looking to move to an active retirement community. Our successes so far are being shared with the friends and families of our residents, which has created enthusiasm for what is to come. The new Wellness Center and program will be a signature feature of a great regional asset; one that I believe will keep people’s focus on Cheshire when it comes to retirement living.”

-Barbara Womer,
Wellness Coordinator, Elim Park



“Cheshire is a great community. After living in town for 47 years, we could think of no better place to retire and live out our days. Elim Park afforded us that opportunity. Elim Park is Cheshire’s Continuing Care Retirement Community; for us, it is the best in Connecticut. The *Celebrate Life!* Capital Campaign is Cheshire’s opportunity to support a great resource - for this generation of residents, as well as the next.”

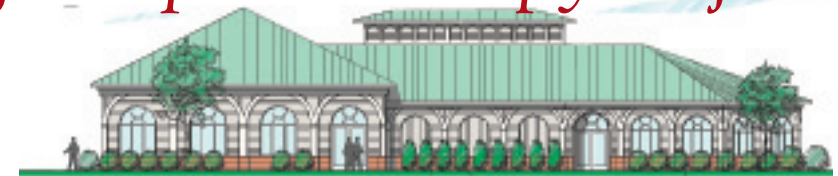
- Nora and Chuck Adams,
Cheshire residents since 1959;
Elim Park residents since 2004

The Wellness Center - A local source for aquatic therapy & fitness

Elim Park’s short term rehabilitation services are a source of healing and support for more than 450 individuals every year from the greater Cheshire area. From our experience, we have come to understand the wellness needs of both our residents and our neighbors. Elim Park is taking two significant actions to create a shift in the way seniors approach aging— we have established a new wellness initiative called HealthAbility™, and will be building a unique Wellness Center to meet the needs of Elim Park residents and the greater Cheshire area.

A bright and welcoming space, the Wellness Center will feature therapeutic and fitness water programs in the warm water natatorium. Fully equipped exercise rooms for cardiovascular and strength-training activities and a large aerobics studio will expand our seniors’ choices for fitness.

Elim Park’s future residents and other local area residents needing therapy will be welcomed to share this new facility with Elim Park’s current residents. In addition, there will be new community-based educational events and lectures to share the benefits of HealthAbility™ with those in the community who wish to engage in enduring lifestyle changes.



Exterior of proposed Wellness Center



Faith and Community

Elim Park is a great
Cheshire resource for:

Community
Health
Family
Faith

Celebrate Life! Capital Campaign —
Making a Great Resource even Better

- Creates a new venue for community cultural events
- Offers rehabilitation options currently not available in Cheshire
- Keeps our local seniors in town to help support our local economy
- Attracts new residents and visitors to the greater Cheshire community
- Positions Elim Park as the premier Continuing Care Retirement Community in the region

Improve Cheshire and our
Quality of Life by supporting the
Celebrate Life! Capital Campaign.

Elim Park

Honoring God in All We Do

About Elim Park

“Then they came to Elim and encamped there.”

- Exodus 15:27

Elim Park is a not-for-profit, 501 (c)(3), nationally accredited, continuing care retirement community. We provide a neighborhood of 218 independent living apartments for seniors looking for housing and an active and fulfilling lifestyle. Our residents have the peace of mind that on-site health care services are available if needed. Residents are our primary focus, and the staff at Elim Park provides services that reflect the organization's core values and commitment to excellence.

For more information about Elim Park, or the *Celebrate Life!* Campaign, please contact us at:

140 Cook Hill Road
Cheshire, CT 06410
203-272-3547
www.elimpark.org
celebratelife@elimpark.org

Creative Design Services for this brochure donated by
Miranda Creative • www.mirandacreative.com

Printing Services for this brochure donated by
Rollins Printing • www.rollingsprintingusa.com