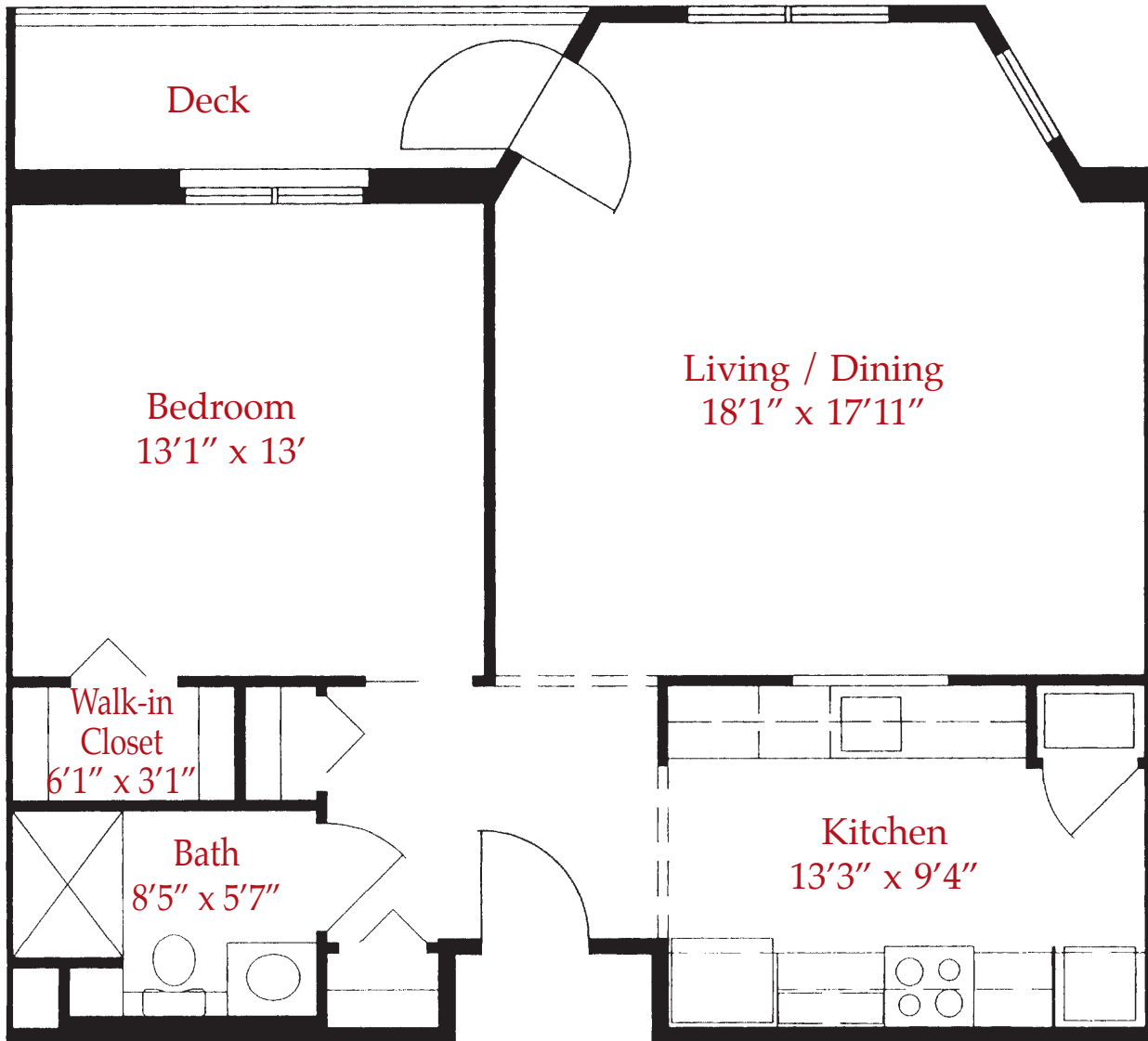




MOUNTAIN VIEW

MYSTIC

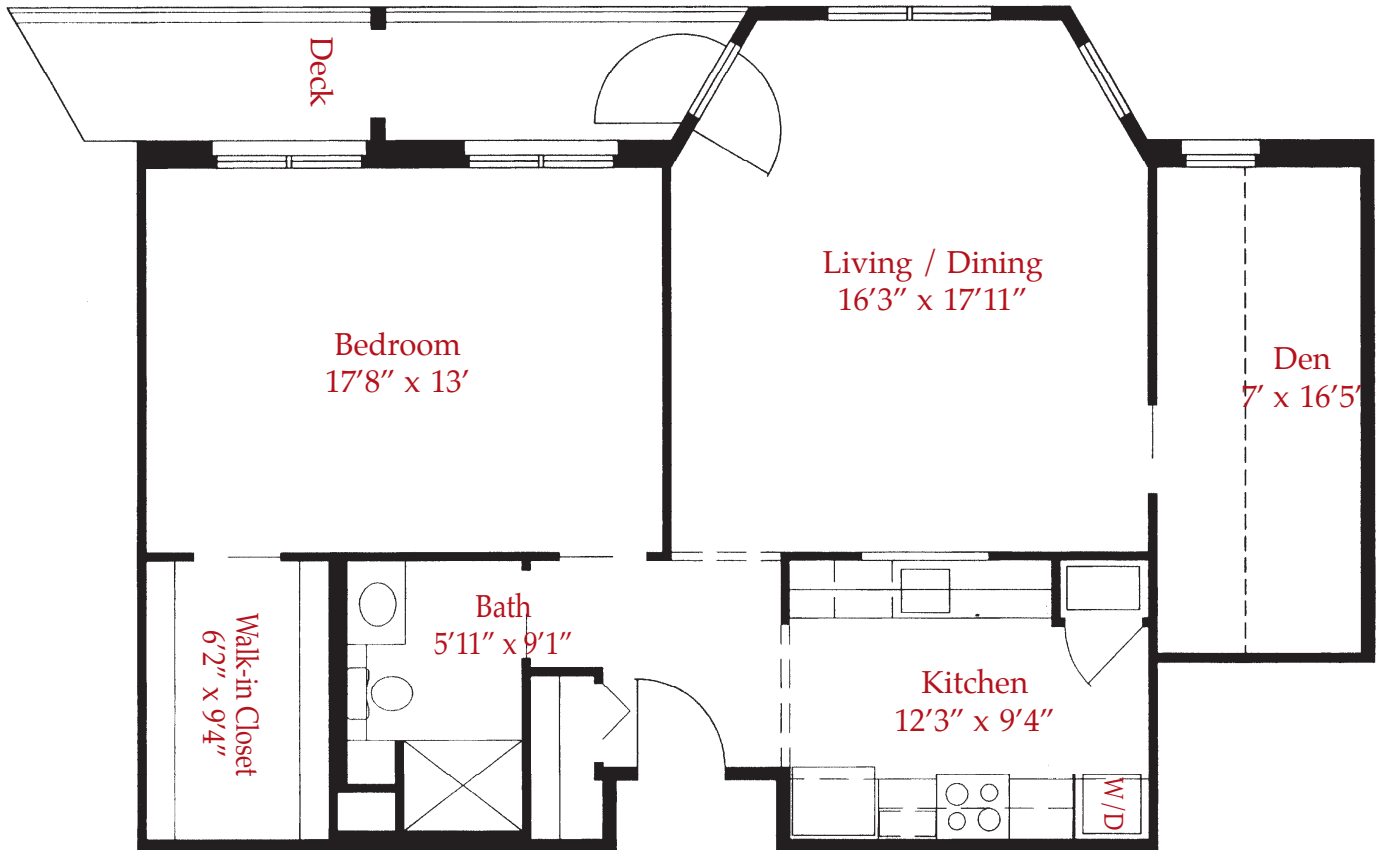
Elim Park Place



- **775 s.f.**
- **1 Bedroom, 1 Bath**
- **Washer & Dryer**
- **Patio / Balcony**
- **2 Additional Walk in Storage Spaces**

** Floor Plans subject to change*

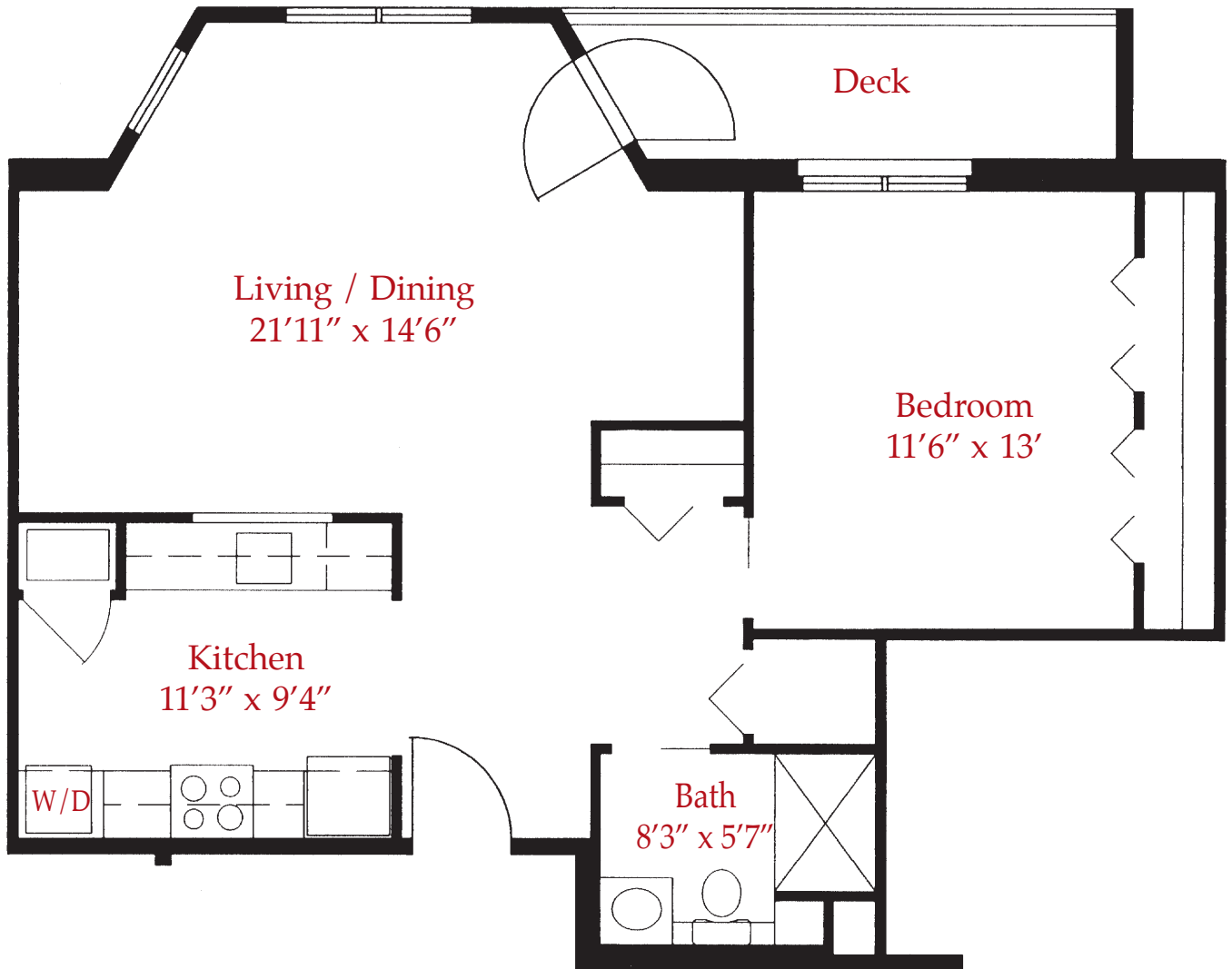




- 836 s.f.
- 1 Bedroom, Den, 1 bath
- Washer & Dryer
- Patio / Balcony
- 2 Additional Walk in Storage Spaces

* Floor Plans subject to change





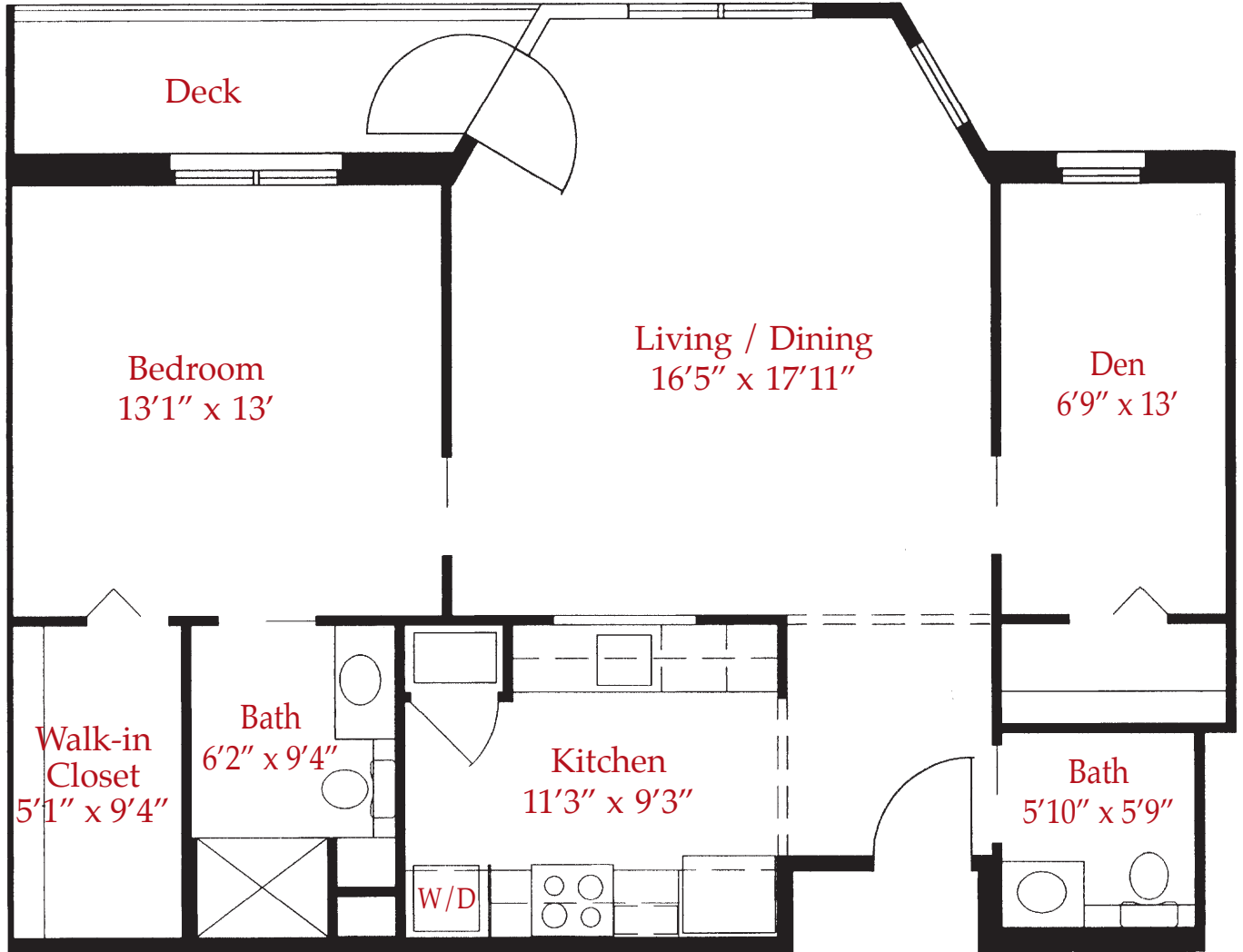
- **737 s.f.**
- **1 Bedroom, 1 Bath**
- **Washer & Dryer**
- **Patio / Balcony**
- **2 Additional Walk in Storage Spaces**

** Floor Plans subject to change*





MOUNTAIN VIEW STONYBROOK Elim Park Place



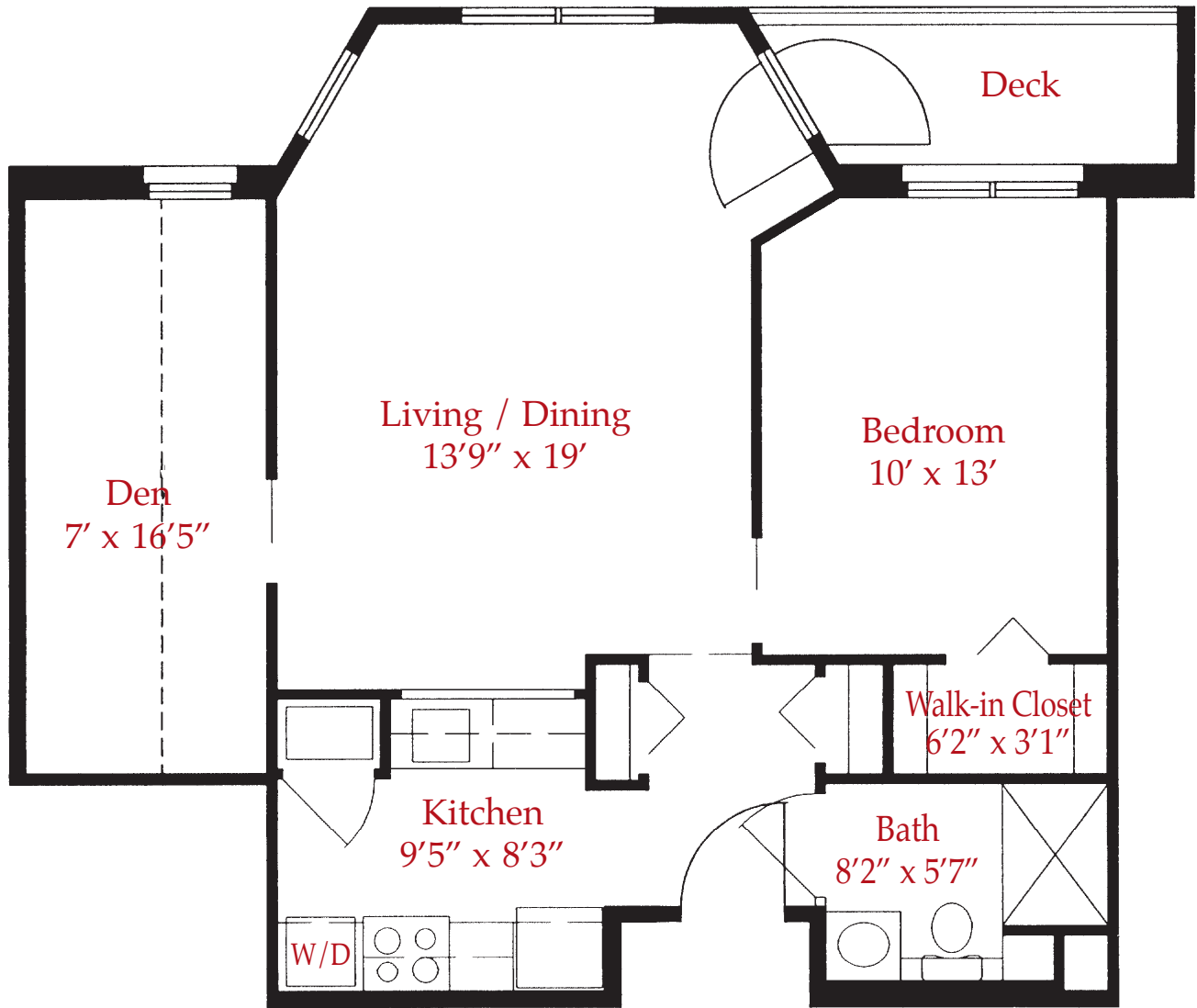
- **894 s.f.**
- **1 Bedroom, Den, 1.5 Bath**
- **Washer & Dryer**
- **Patio / Balcony**
- **2 Additional Walk in Storage Spaces**

** Floor Plans subject to change*





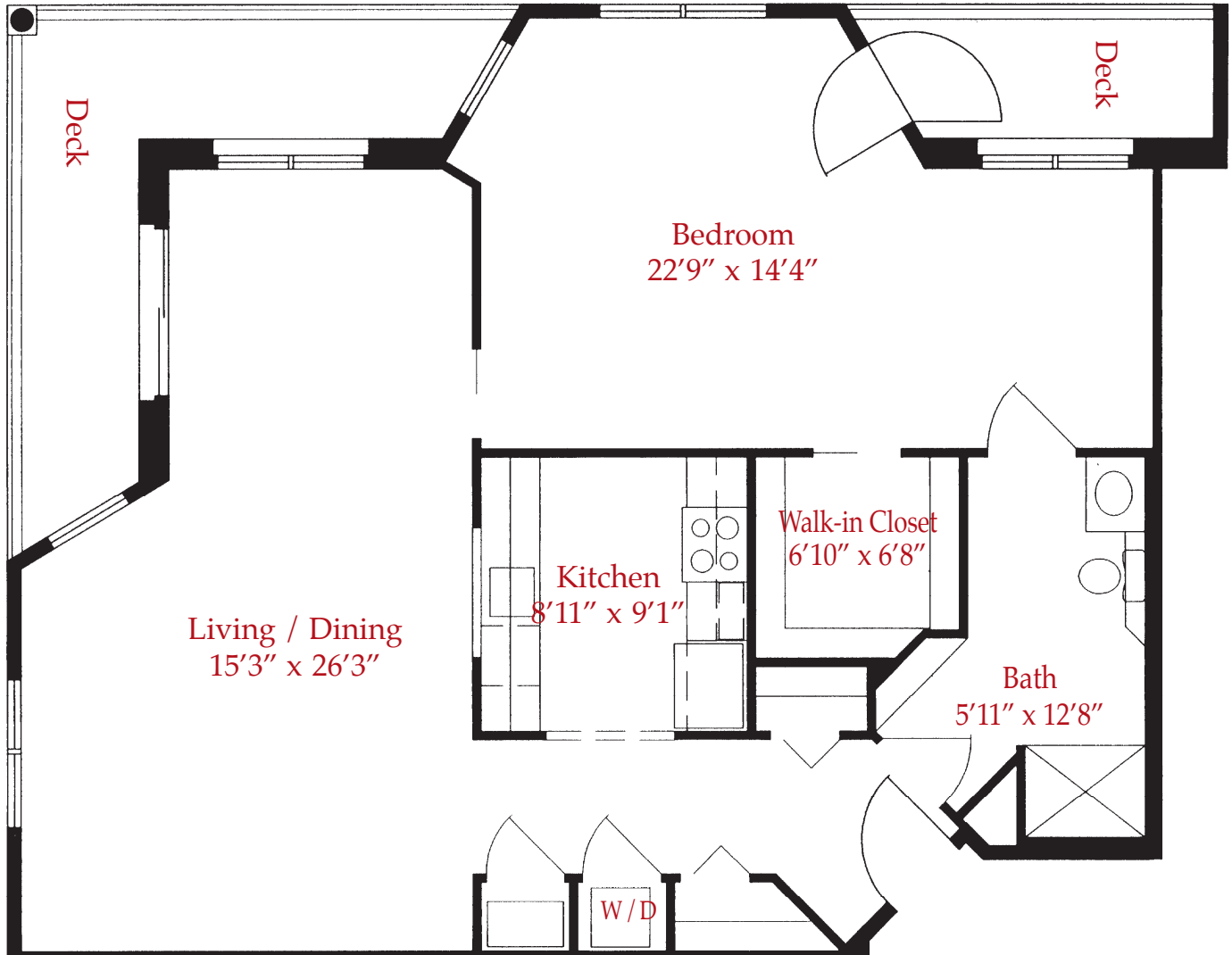
MOUNTAIN VIEW **PORTSMOUTH** **Elim Park Place**



- **604 s.f.**
- **1 Bedroom, Den, 1 Bath**
- **Washer & Dryer**
- **Patio / Balcony**
- **2 Additional Walk in Storage Spaces**

** Floor Plans subject to change*





- **991 s.f.**
- **1 Bedroom, 1 Bath**
- **Washer & Dryer**
- **Patio / Balcony**
- **2 Additional Walk in Storage Spaces**

** Floor Plans subject to change*

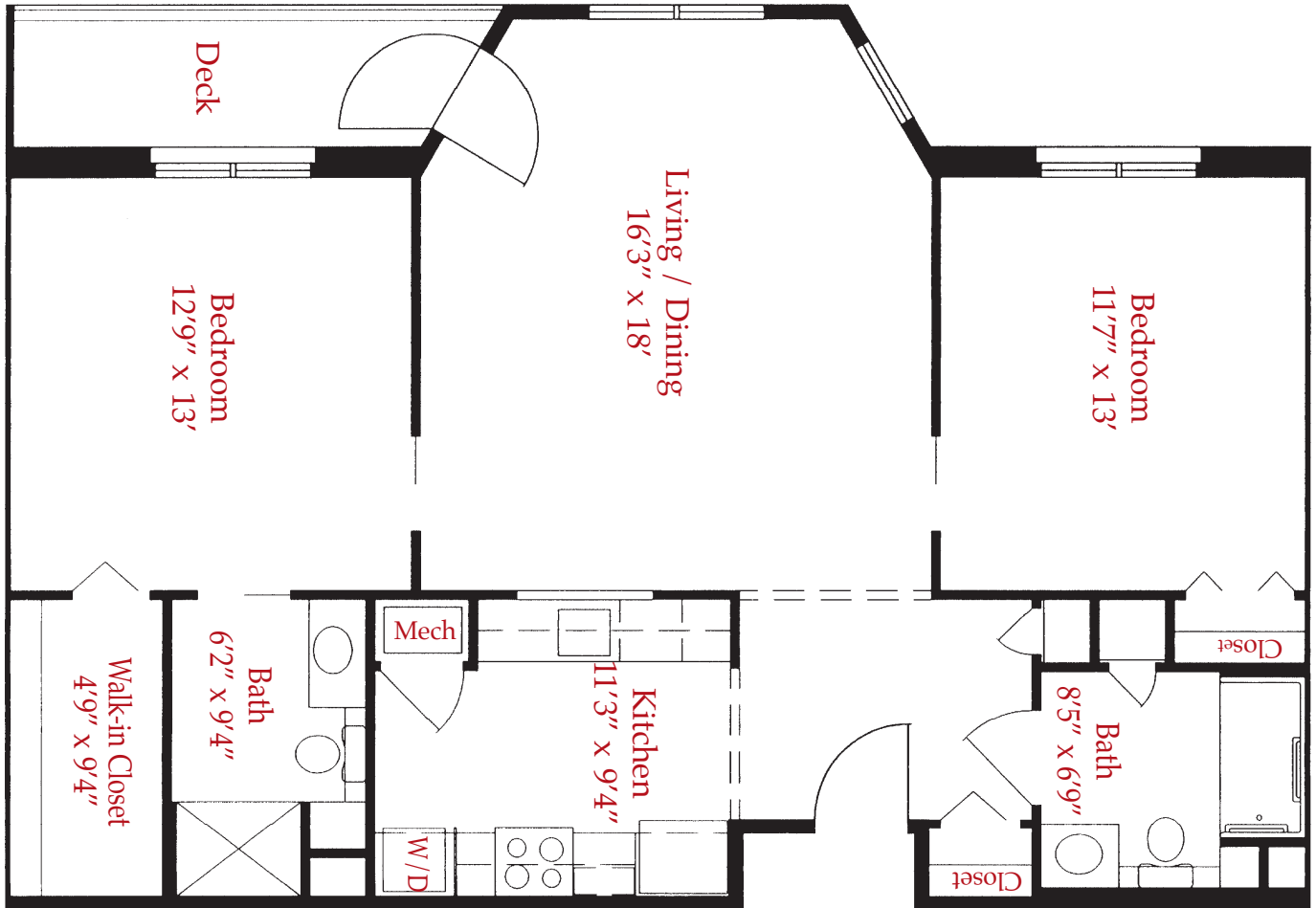




MOUNTAIN VIEW

NANTUCKET

Elim Park Place



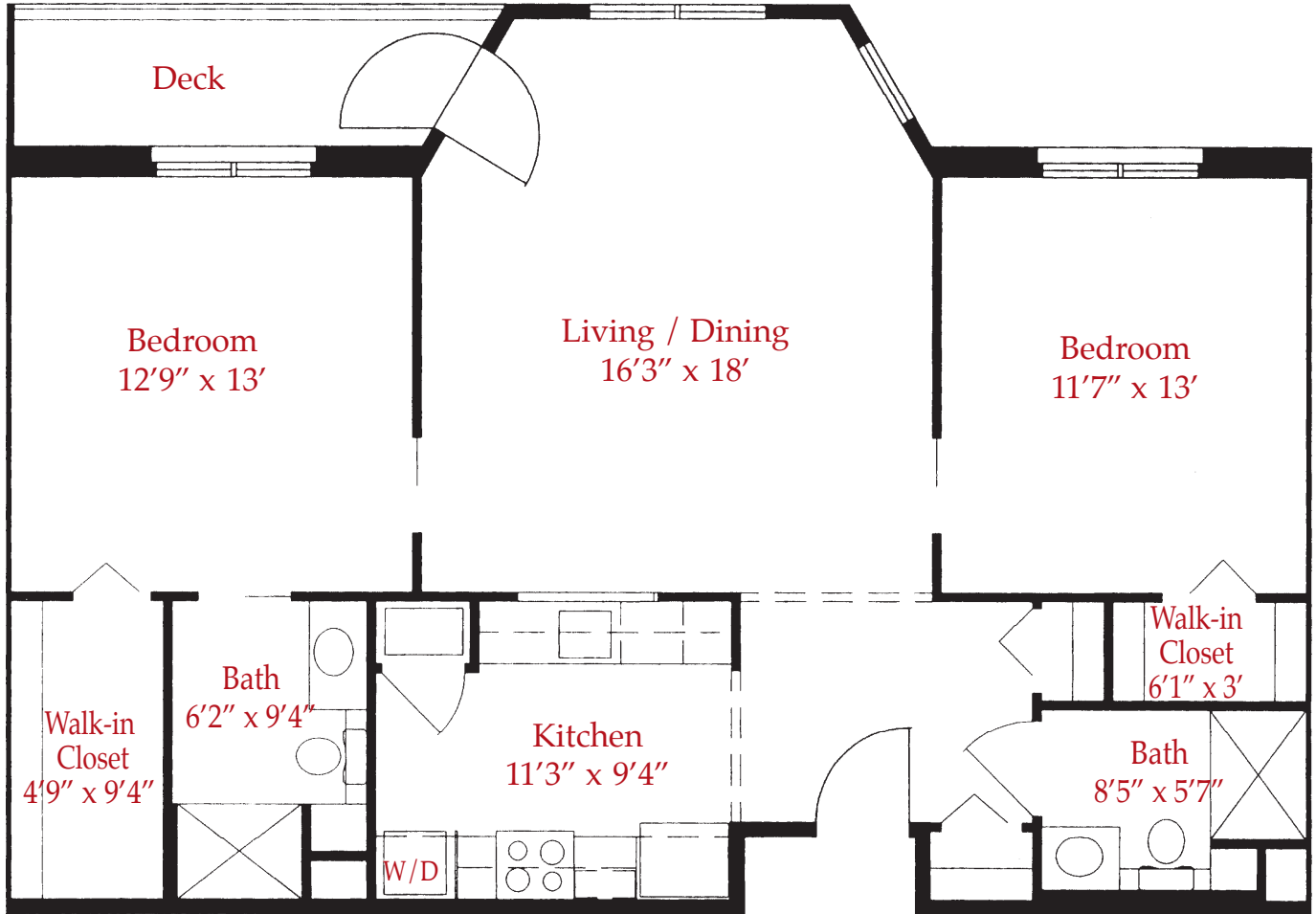
- **1002 s.f.**
- **2 Bedroom, 2 Bath**
- **Washer & Dryer**
- **Patio / Balcony**
- **2 Additional Walk in Storage Spaces**

** Floor Plans subject to change*





MOUNTAIN VIEW NANTUCKET ALT. **Elim Park Place**



- **1002 s.f.**
- **2 Bedroom, 2 Bath**
- **Washer & Dryer**
- **Patio / Balcony**
- **2 Additional Walk in Storage Spaces**

** Floor Plans subject to change*

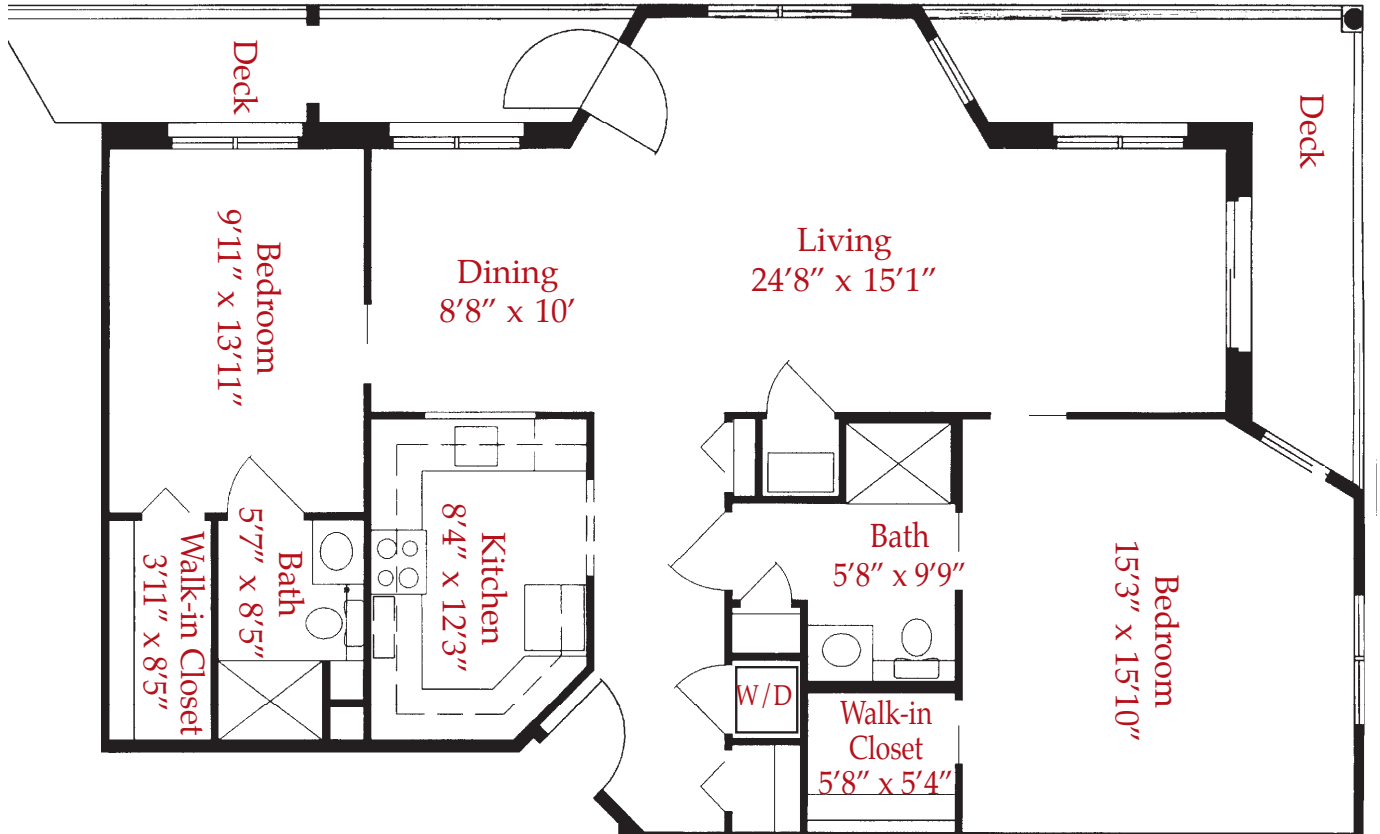




MOUNTAIN VIEW

BYRAM

Elim Park Place



- **1225 s.f.**
- **2 Bedroom, 2 Bath**
- **Washer & Dryer**
- **Patio / Balcony**
- **2 Additional Walk in Storage Spaces**

** Floor Plans subject to change*

